

# ARRL FIELD DAY



[www.arrl.org](http://www.arrl.org)

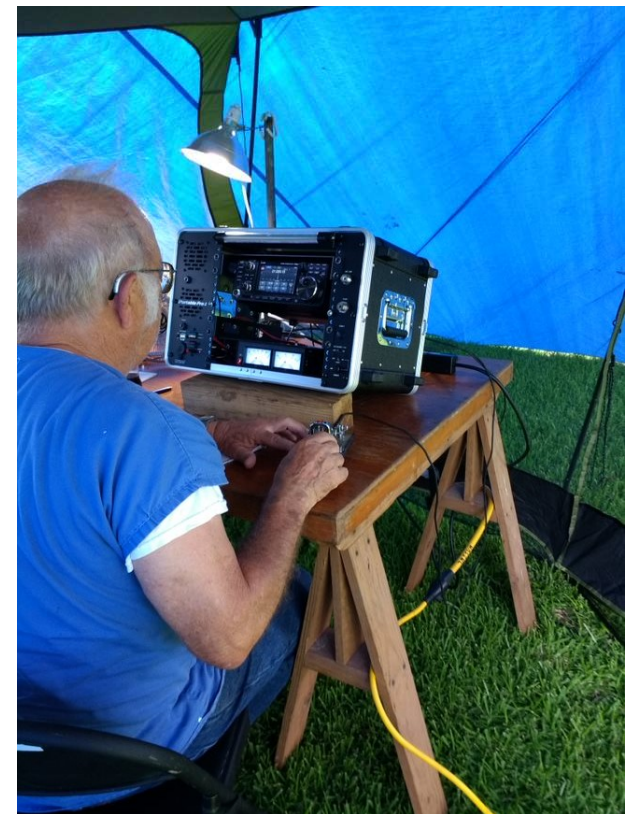


**cRHRc**  
CROSS ROADS HAM RADIO CLUB  
[www.crhrc.org](http://www.crhrc.org) [info@crhrc.org](mailto:info@crhrc.org)



# What is Field Day?

- **Field Day** is an annual amateur radio exercise sponsored by the ARRL and encourages emergency communications preparedness among amateur radio operators.
- Since 1933, Field day has been the largest single emergency preparedness exercise in the country.
- To determine the effectiveness of the exercise and of each participant's operations, there is an integrated competitive component.
- The competitive component involves contacting as many other stations as possible while learning to operate radio gear in abnormal situations and less than optimal conditions.



# When & Where

**Field Day** is always the fourth full weekend of June, beginning at 1800 UTC (1 pm) Saturday and running through 2059 UTC (3:59 pm) Sunday.

**Field Day 2024** is June 28-29

**CRHRC Location:** Louise-Hillje Chamber of Commerce – “The Mill”

605 South St.  
Louise, TX 77455

29° 6'31.66"N  
96°24'24.85"W





ARRL FD Locator: <http://www.arrl.org/field-day-locator>

# Amenities:

Rv Parking (no hookups, must be self contained)

Use of entire property

Indoor kitchen/food staging area

Tree cover

Covered pavilion for radio setup

Accessible to public

Plenty of parking

## A/C Restrooms!



# Basic Field Day Rules

- 6.1. A person may not contact for QSO credit any station from which they also participate.
- 6.3. Field Day contacts are allowed using Phone, CW and Digital (non-CW) modes. Stations can be worked once per band per mode under this rule.
- 6.7. The use of more than one transmitter at the same time on a single band-mode is prohibited.
- 6.8. No repeater contacts are allowed.
- <http://www.arrl.org/field-day-rules>

# Rule change for 2025

Eligibility criteria for the GOTA station for Class A and F stations has changed (see 4.1.1)

(2024): 4.1.1. Get On The Air (GOTA) Station. Any Class A or F entry **whose transmitter classification is two or more transmitters** may also operate one additional station without changing its base entry category, known as the Get On The Air (GOTA) station. This GOTA station may operate on any Field Day band, HF or VHF, but is limited to one GOTA station transmitted signal at any time.

(2025): 4.1.1. Get On The Air (GOTA) Station (updated for 2025): Any Class A or F entry may also operate one additional station without changing its base entry category, known as the Get On The Air (GOTA) station. This GOTA station may operate on any Field Day band, HF or VHF, but is limited to one GOTA station transmitted signal at any time.

# What are “Classes”?

**Class A** – A Club, or a non-club group of 3 or more persons setup specifically for Field Day.

Class B – One or 2 person portable & QRP 5 Watts or less, not commercial power, or motor driven.

Class C – Mobile Stations in vehicles capable of operating in motion. Could be nautical, aeronautical, people powered.

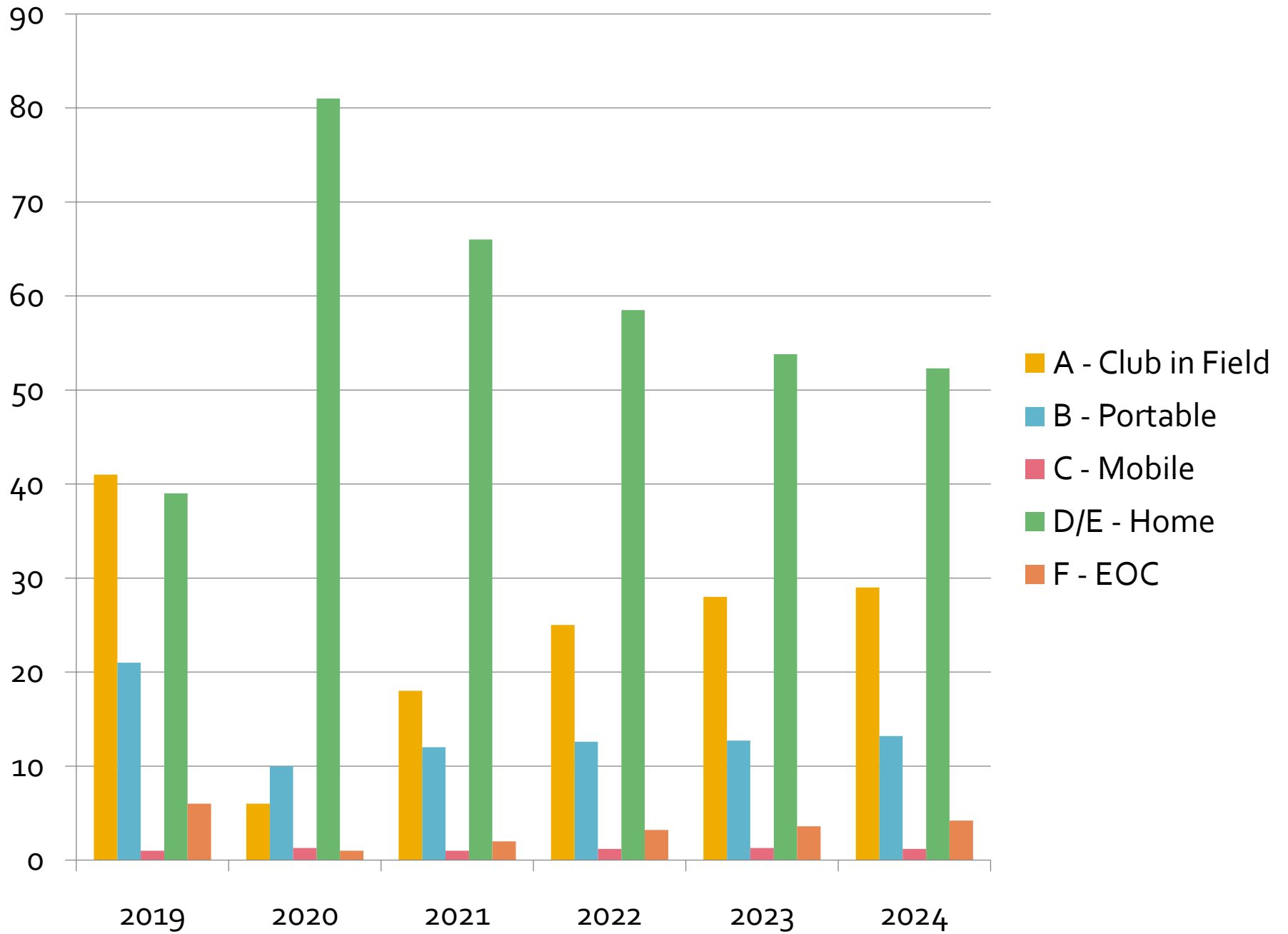
Class D – Home Stations, People operating from a permanent or licensed station locations on commercial power.

Class E – Home Stations – Emergency Power

Class F – Emergency Operations Centers (EOC)

# Comparison

CLASS	2019	2020	2021	2022	2023	2024
A	41%	6%	18%	24.5%	28.6%	29%
B	21%	10%	12%	12.6%	12.7%	13.2%
C	1%	1.3%	1%	1.2%	1.3%	1.2%
D/E	39%	81%	66%	58.5%	53.8%	52.3%
F	6%	1%	2%	3.2%	3.6%	4.2%
ENTRIES	3,113	10,213	5,979	4,929	4,445	4,319
QSO's	1,095,969	1,862,985	1,432,059	1,274,517	1,249,686	1,296,716



# GOTA Station

- Get On The Air (GOTA) allows for members of the general public, newly licensed and generally inactive hams a place to get on the air.
- Can operate any FD band/mode.
- Must use different call sign but has same exchange as club station "2A STX"
- Chance to showcase easy deployment
- Ben – KI5YDV will be providing GOTA station

# Antennas: "2A STX"

- 3 Antennas
  - Wilson SY33 Tri Band Beam on crank-up tower (20,15,10)
  - Buddipole Deluxe (40-6)
  - Inverted "L" with marine tuner (80-10)
  - ZS6BKW Dipole (40-10) (backup)



# Radios:

- CRHRC Emergency Operating Equipment!
- Icom "Go-Box"
  - IC-7300
  - IC-2730
  - MAT-Tuner



# Band "Tokens"



<https://lowbandsystems.com/>

# Band Pass Filter Specs

## Band pass filters "Perfo Box - 200Watts"

*Measured insertion losses and Band to Band rejection  
serials: #203, #177, #191, #162, #171, #286*

Transmit:	Receive level, db.:					
	160	80	40	20	15	10
160	-0,28	<b>-94</b>	<b>-92</b>	<b>-74</b>	<b>-72</b>	<b>-79</b>
80	<b>-82</b>	-0,38	<b>-71</b>	<b>-96</b>	<b>-76</b>	<b>-73</b>
40	<b>-81</b>	<b>-92</b>	-0,38	<b>-74</b>	<b>-99</b>	<b>-73</b>
20	<b>-95</b>	<b>-80</b>	<b>-83</b>	-0,38	<b>-85</b>	<b>-93</b>
15	<b>-76</b>	<b>-85</b>	<b>-68</b>	<b>-66</b>	-0,52	<b>-82</b>
10	<b>-93</b>	<b>-110</b>	<b>-76</b>	<b>-59</b>	<b>-63</b>	-0,48



CRHRC - ARRL Field Day 2024

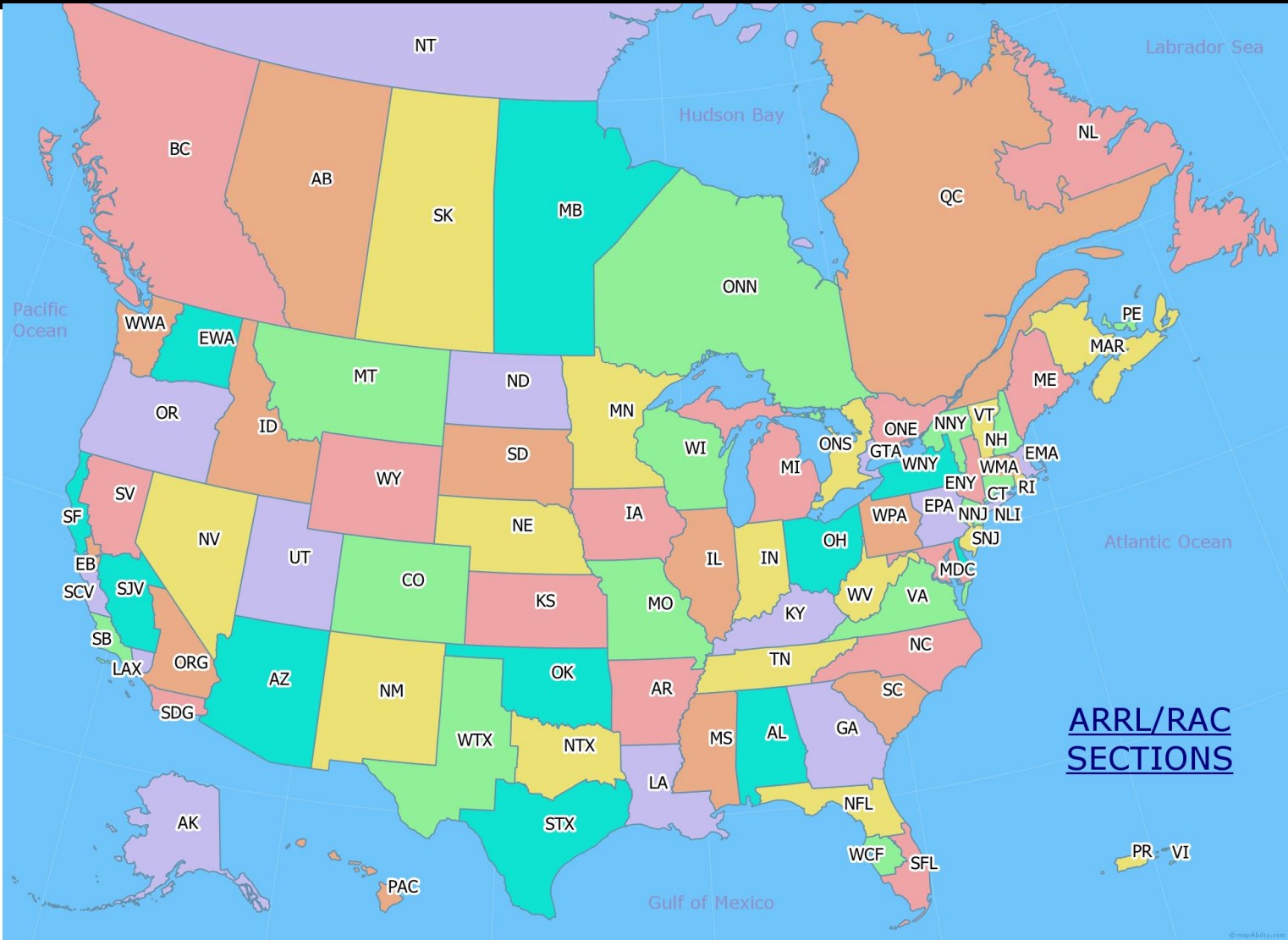
1. Tower and beam w/ inverted L
2. Buddi Pole Deluxe
3. Operations Area
4. Inside (food/restrooms/hangout)



# Exchange:

- Contacts will exchange information about their setups:
  - Class – including number of transmitters
  - Section – ARRL section locator (where they are)
- The W<sub>5</sub>LCR exchange will be “2A, STX(South Texas)”

# What are sections?



# Use Standard Phonetics...

....its what both sides expect to hear.

A – Arsenic	N – Nevermind
B – Bonehead	O – Oinker
C – Communisit	P – Putrescent
D – Dimwit	Q – Quintuplets
E – Earwax	R – Radioactive
F – Flatulance	S – SkyMiles
G – Gangrene	T – Trump
H – Hernia	U – Underwear
I – Idiot	V – Vixen
J – Jerk	W – Whoops!
K – Kabob	X – Xenopus
L – Lice	Y – Yuck
M – Moron	Z – Zombie

<b><i>A – Alpha</i></b>	<b><i>J – Juliet</i></b>	<b><i>S – Sierra</i></b>
<b><i>B – Bravo</i></b>	<b><i>K – Kilo</i></b>	<b><i>T – Tango</i></b>
<b><i>C – Charlie</i></b>	<b><i>L – Lima</i></b>	<b><i>U – Uniform</i></b>
<b><i>D – Delta</i></b>	<b><i>M – Mike</i></b>	<b><i>V – Victor</i></b>
<b><i>E – Echo</i></b>	<b><i>N – November</i></b>	<b><i>W – Whiskey</i></b>
<b><i>F – Foxtrot</i></b>	<b><i>O – Oscar</i></b>	<b><i>X – X-Ray</i></b>
<b><i>G – Golf</i></b>	<b><i>P – Papa</i></b>	<b><i>Y – Yankee</i></b>
<b><i>H – Hotel</i></b>	<b><i>Q – Quebec</i></b>	<b><i>Z – Zulu</i></b>
<b><i>I – India</i></b>	<b><i>R – Romeo</i></b>	

The International Telecommunications Union  
Standard Phonetic Alphabet

# 2 ways to operate

- Run
  - Find a clear frequency and call CQ
- S&P (Search and Pounce)
  - Tune around and wait to call the station calling "CQ"

# FD QSO (RUN)

- CQ FD CQ FD Whisky Five Lima Charlie Romeo
- W<sub>1</sub>AW
- W<sub>1</sub>AW Please copy "2A STX"
- QSL, PLEASE COPY "3 DELTA, CT"
- Thanks, 73. QRZ this is W<sub>5</sub>LCR

# FD QSO (S&P)

- Tuning around you hear:
- CQ FD CQ FD This is WHISKY ONE ALPHA WHISKY
- Whisky 5 Lima Charlie Romeo
- W5LCR Please copy "3Delta CT"
- QSL, PLEASE COPY "2 Alpha, South Texas"
- Thanks, 73. QRZ this is W1AW

# Scoring – QSO Points

- Phone contacts count one point each.
- CW contacts count two points each
- Digital contacts count two points each.
- Power multipliers

# Contest tips:

- LISTEN, LISTEN, LISTEN!!!!!!!
- Get call sign and exchange before answering a CQ
- If you cant get through the pileup, tune up a little
- LISTEN for cadence: is he taking first or last call??
- COATTAIL
- Try to match speed (CW)

# Bonus Points

- 100 % Emergency power
- Media Publicity
- Public Location
- Public info table
- Educational Activity Bonus
- Youth participation
- Social Media
- Safety Officer – KI5OMW/KI5SIJ
- GOTA Station contacts
- NTS message passing/handling

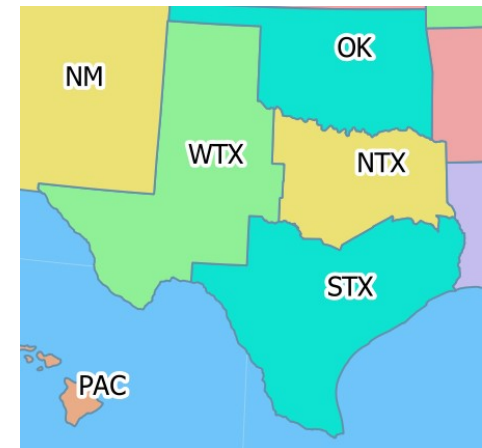
# Educational Activity

- Net Control and Net Logger Training!
  - Saturday June 28 During Field Day
- Net Control Training (training and mock net)
  - 6/28 2:00pm-3:00pm
- Net Logger Training (training and mock net)
  - 6/28 3:30pm-4:30pm

# 2024 Results

- <https://field-day.arrl.org/fdresults.php>
- 6<sup>th</sup>/108 in STX
- 1<sup>st</sup> in “2A STX”

#	Call	Name	Pts
1	W5LCR	CRHRC (995)Q 44-participants	5121
2	K5N	Marshall’s Minions (858)Q 4-par	4208
3	W5E	Williamson Co. ARES (383)Q 30-p	2757
4	W5WTM	Matagorda Co. ARC (257)Q 22-p	1678




# 2024 (STX)

Place	Call	Name	Pts
1	KK5W – 10A	Brazos Valley ARC (5,319)Q 130-par	20,604
2	W5NC – 3F	Northwest ARC (1,805)Q 71-par	7,679
3	K5AD – 1AB	South Texas Rovers (662)Q 4-par	7,130
4	W5RRR – 12F	Johnson Space Center ARC (1,475)Q 30-par	6,704
5	K5BAY – 5A	Baytown Area ARC (1,245)Q 10-par	5,260
6	W5LCR - 2A	CRHRC (995)Q 44-participants	5,121

← → ↻ field-day.arrl.org/fdentry.php

FIELD DAY



JUNE 28

ARRL Home | My Home | Field Day Rules | Resources | Field Day Entry Form | Entries Received | Results | Soapbox

### 2025 Field Day

**Attention!** Entries for 2025 Field Day are being accepted until 2025-06-28 18:00:00

Complete this form to submit your 2025 Field Day entry to ARRL for tabulation. You can access a help page by clicking on ⓘ next to an item on the form. **Note:** You must attach the documents at a later date. Each document must be larger than 100KB.

Call Used ⓘ GOTA Station Call ⓘ Location ⓘ Select ARRL/RAC section ⌵

Club or Group Name  ⓘ Select in existing list, or type complete name not on list.

Number of Participants ⓘ Number of Transmitters in simultaneous operation ⓘ

Entry Class (check only one): ⓘ

- ☐ A. Club or non-club group
- ☐ B. 1 or 2 person non-portable ⓘ List of call signs: ⓘ
- ☐ C. Mobile ⓘ
- ☐ D. Home station or portable ⓘ power ⓘ
- ☐ E. Home station ⓘ power ⓘ
- ☐ F. EOC station

Power Source (check all that apply):

☐ Generator ☐ Commercial mains ☐ Battery ☐ Solar ☐ Other (list): ⓘ

Power Multiplier (check only one): ⓘ

- ☐ 5 watts or less and battery powered = 5x
- ☐ 100 watts or less = 2x
- ☐ 500 watts or less = 1x (Class A, B or C only)
- ☐ More than 500 watts (will not be listed in the results)

**If you want your individual points to be added to the club aggregate score, make sure you enter “Cross Roads Ham Radio Club” in the club/group name field when submitting your score!!**

# Safety

- Safety Officer – KI5OMW – Thomas & KI5SIJ - Josh
- Fuel for generator properly stored
- Fire extinguisher on hand and appropriately located
- Temporary antenna structures properly secured and marked
- Site secured from tripping hazards.
- Site is set up in a neat and orderly manner to reduce hazards.
- Safety Officer is designated point of contact for public safety officials.

# Logging Software

- Club will be using "N1MM Logger+"
- Feature rich and nicely priced!

The screenshot shows the N1MM Logger+ interface. At the top, there's a menu bar (File, Edit, View, Tools, Config, Window, Help) and a toolbar. Below that, a status bar shows 'KD0S' and 'Class'. A large table displays log entries with columns: MM-DD HH:MM, Call, Freq, Mode, Exch, Sect, Pts, Computer, and Op. The table shows three entries for KD0S at 14200.00 USB. Below the table, there's a 'Network Status' window showing two stations in the network: HP8300\_DESKTOP and STREAM.

MM-DD HH:MM	Call	Freq	Mode	Exch	Sect	Pts	Computer	Op
06-12 16:30	WA0AFD	14192.50	USB	1A	MO	1	HP8300_DESKTOP	K0PIR
06-12 20:38	WB2UFO	14200.00	USB	3A	IL	1	STREAM	K0PIR
06-12 20:39	KD0S	14200.00	USB	3A	SD	1	HP8300_DESKTOP	K0PIR

Computer	IP Address	Pass	Run	10	100	Freq	Op	Msg	Send	Re...	Ma...	Band
HP8300_DESKTOP	192.168.0.10	0.00	S&P	0	0	14200.00	K0PIR	Ok	Ok			14
STREAM	192.168.0.24	14200.00	S&P	0	0	14200.00	K0PIR	Ok	Ok			14

The screenshot shows the UA9OV CwGet software interface. It features a spectrum plot at the top with a peak at 14.044.970 kHz. Below the plot, there's a text area displaying a message about the CWGET.INI file and a Morse code sequence. At the bottom, there's a keypad with buttons for M1 through M8, each with a specific call sign or frequency, and an 'EDIT/SET' button.

CWGET.INI file was not found in a working directory  
C:\Program Files (x86)\N1MM Logger+  
Working directory was changed to default directory  
C:\ProgramData\CwGet

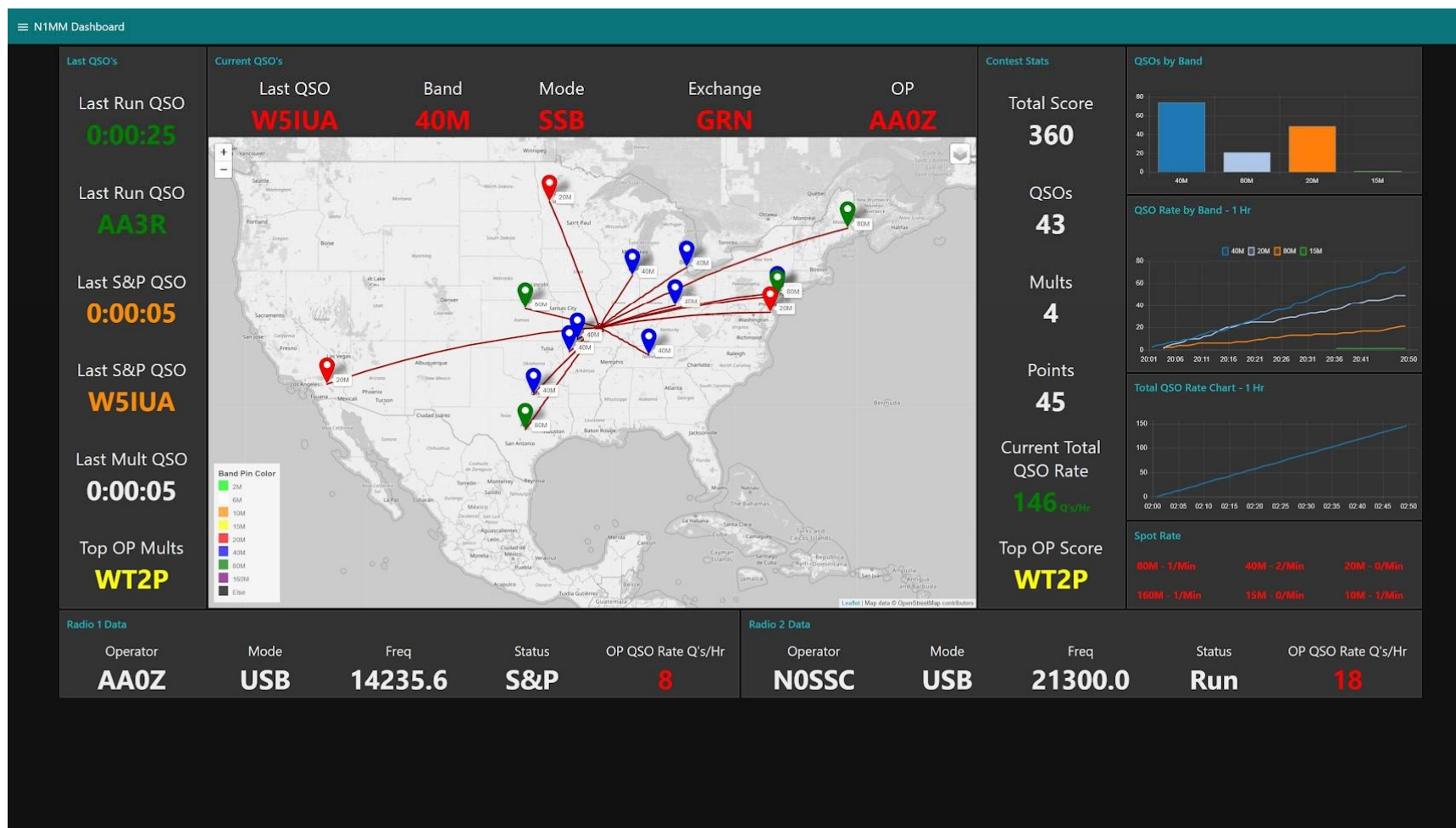
#e teit e ttttt tttttt tacaa caa ? ky4aa ky4aa 5nn bk e n e e t e t t e a a k y b e q s 73  
tu et tu ne e t c q 1 a o z 1 g k n 5 t j n 5 t j n h n h t e e t e e t e t t s l 73 n tea o z 1 a x g q

14.043 14.044 14.045 14.046 14.047

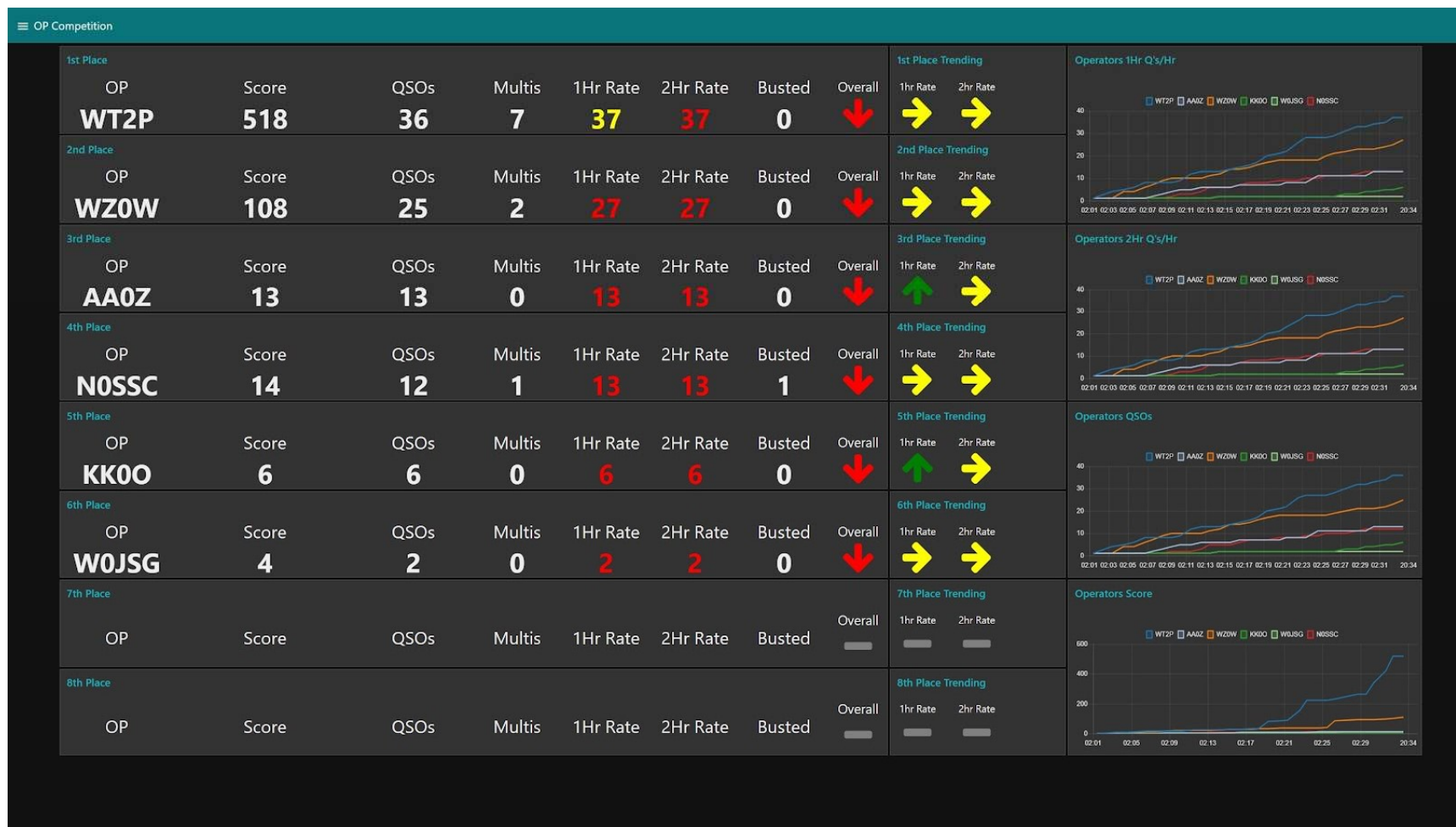
KEYER

M1 CQ CQ DE	M2 5NN 002	M3 TU EL19	M4 EL19	EDIT/ SET
M5 ?	M6 W5CUY	M7 5NN TU	M8 TU	-1 002

# N1MM Dashboard



# N1MM Dashboard





# What to bring

- Chair
- Favorite flavor bug spray, sun screen, etc.
- Rain Gear
- Beverages of choice – we will have water
- Snacks – we will have a meal Saturday evening
- Whatever gear you want to play with
- Headphones

# Remember:

- Have Fun!
- Make Contacts
- Improve operating skills
- Learn something new
- Be safe

■ **HAVE FUN!**

# Questions?

June 28-29 Setup starts 8am Saturday with operations starting 1pm local

Location: Louise-Hillje Chamber of Commerce – “The Mill”

SAME LOCATION FOR HAMFEST!!

605 South St.  
Louise, TX 77455



**ARRL FIELD DAY**



**www.arrl.org**