

cRHRc

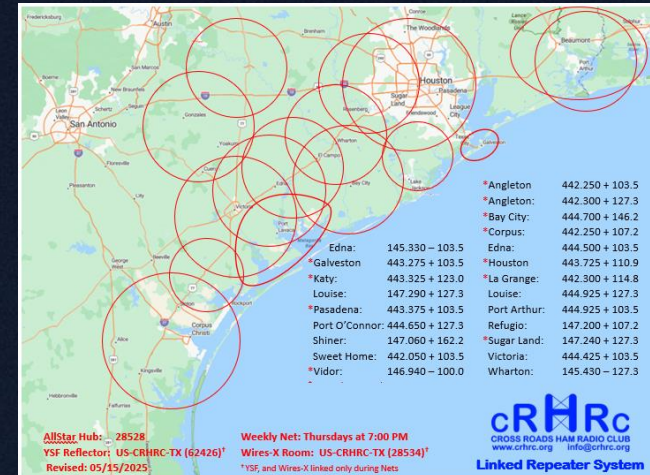
CROSS ROADS HAM RADIO CLUB

Tech Net #22
Sep 8, 2025

www.technet.crhrc.org

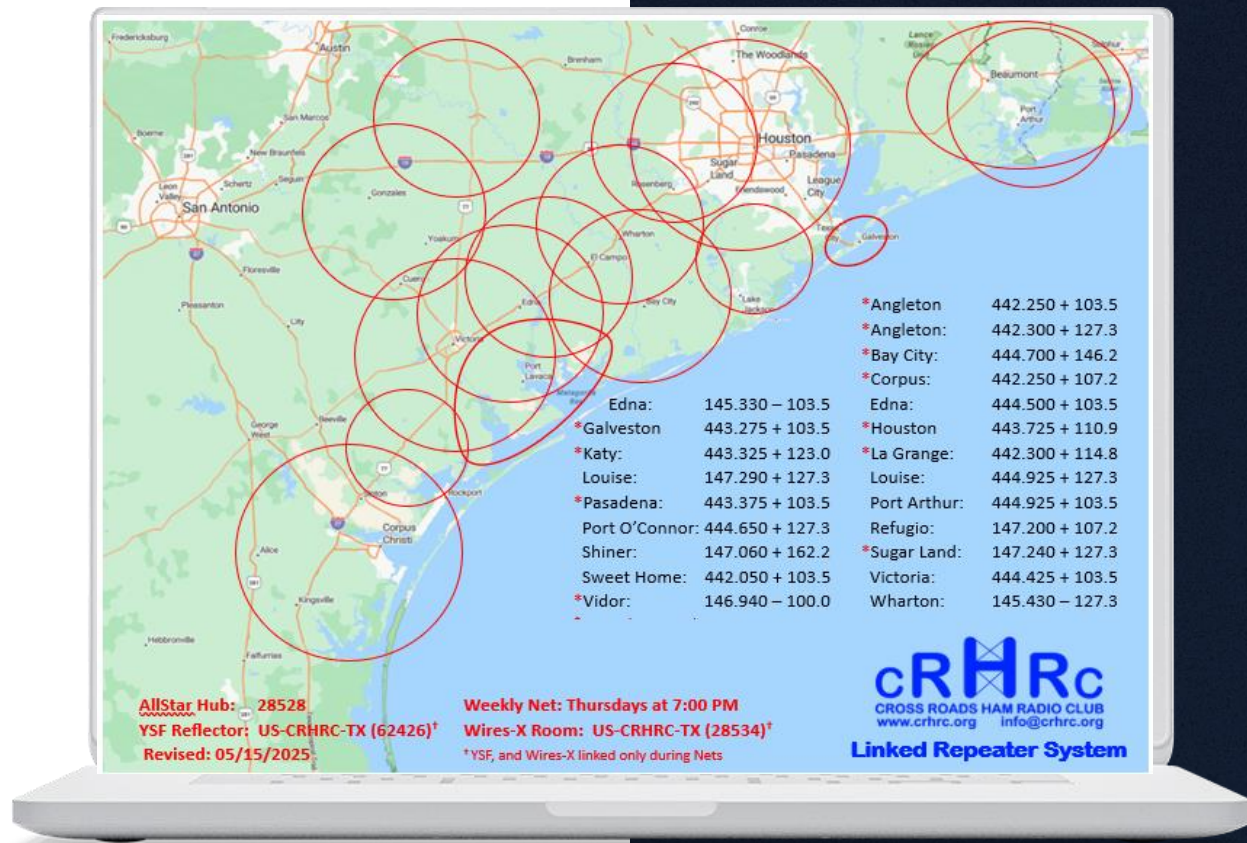
CRHRC Repeater Network Update

Presented by Brian, N5TZV and
Robert, KB5PBM



Agenda

- Current Network Coverage
- Analog Ways to Connect
- Digital Ways to Connect
- System Status Page
- Network Etiquette
- Connection Policies
- Q&A



Current Network Coverage

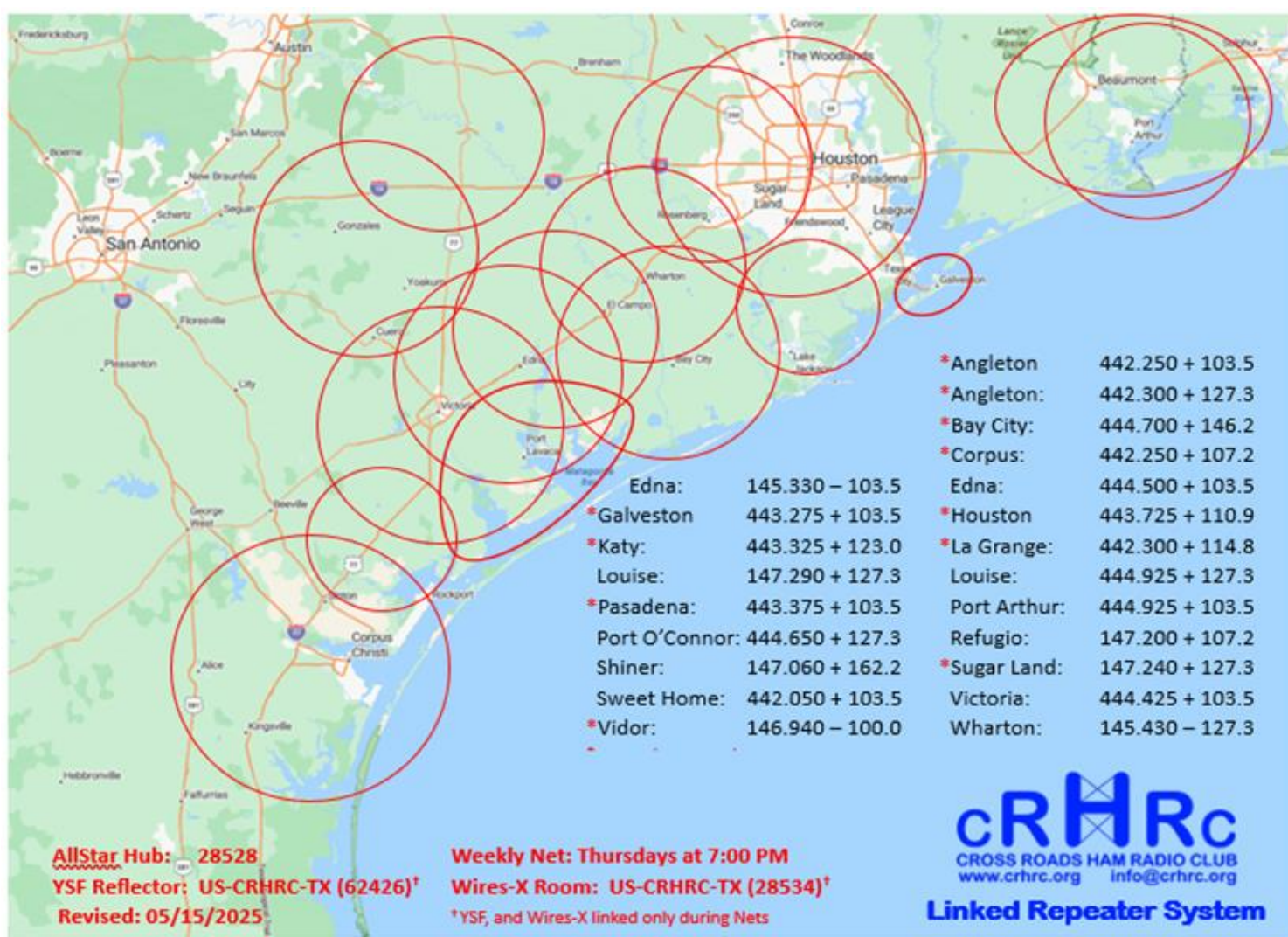
- crhrc.org (map)
- crhrc.org/repeaters (repeater database)

CRHRC Repeater Database

Print Excel CSV Copy PDF

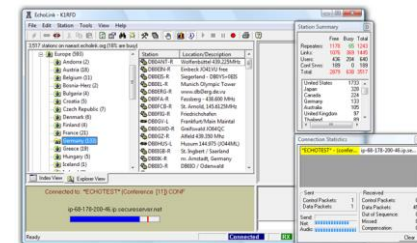
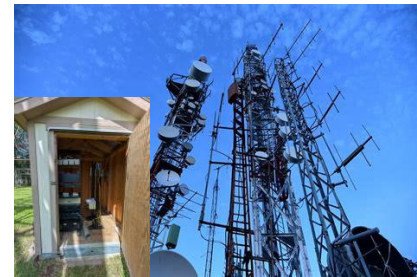
Show 10 entries Search:

| City | County | Call Sign | Freq | Offset | Mode | Bandwidth | PL / Color | Notes |
|---------------------|-----------|-----------|---------|-----------|--------------|-----------|------------|-----------------------|
| Angleton | Brazoria | K5BRZ | 442.250 | +5.00 kHz | Analog | WIDE | 103.5 | LINKED TO CRHRC (P) |
| Angleton | Brazoria | K2SVFD | 442.300 | +5.00 kHz | Analog | WIDE | 127.3 | LINKED TO CRHRC (P) |
| Austin | Travis | N2GJA | 145.110 | -000 kHz | Analog | WIDE | 103.5 | LINKED TO CRHRC (P) |
| Bay City | Matagorda | W0VTH | 444.700 | +5.00 kHz | Analog | WIDE | 146.2 | LINKED TO CRHRC (P) |
| Corpus Christi | Nueces | N0COP | 442.250 | +5.00 kHz | Analog | WIDE | 107.2 | LINKED TO CRHRC (P) |
| Edna | Jackson | W5LJR | 145.330 | -000 kHz | Analog | WIDE | 103.5 | LINKED TO CRHRC |
| Edna | Jackson | W5LJR | 444.500 | +5.00 kHz | Analog | WIDE | 103.5 | LINKED TO CRHRC |
| Edna - DMR | Jackson | W5LJR | 444.000 | +5.00 kHz | DMR | NARROW | CC7 | LINKED TO CRHRC (TS) |
| Edna - YSF | Jackson | W5LJR | 442.525 | +5.00 kHz | Fusion (YSF) | DMR | | Wires-X & YSF Reflect |
| Galveston | Galveston | K2CFDG | 443.275 | +5.00 kHz | Analog | WIDE | 103.5 | LINKED TO CRHRC (P) |
| Houston | Harris | W5D5A | 146.700 | -000 kHz | Analog | WIDE | 103.5 | LINKED TO CRHRC (P) |
| Houston - Wide Area | Harris | AC5GX | 443.725 | +5.00 kHz | Analog | WIDE | 110.9 | LINKED TO CRHRC (P) |
| Houston - YSF | Harris | W5D5A | 444.500 | +5.00 kHz | Fusion (YSF) | DMR | | LINKED TO YSF Reflect |



Analog Voice Ways To Connect

- FM Repeaters Connected via Internet Utilizing AllStarLink (allstarlink.org) Technology
 - CRHRC Network Includes Member and Club Owned Repeaters
- EchoLink W5LCR-L (echolink.org)
- AllStar Analog Voice Nodes (Shari Nodes, Phone Apps, etc.)
 - CRHRC Test Hub Node # 614491 – Great for Off-Network QSO's



Q&A

Digital Voice Ways To Connect



- **DMR**

- Two DMR Talk Groups; TG 11 and TG 50
- DMR Repeaters; Edna, Wharton and Pasadena
- DMR MMDVM (PiStar or WPSD) Users CRHRC TG 11 and CRHRC TG 50
 - TG 11 Connects to AllStar 28528 Full Time
 - TG 50 Connects DMR Repeaters Together, DMR Only
- E-mail info@chrc.org for More Information



- **P25**

- TG 8610 on MMDVM (PiStar or WPSD)

- **Yaesu Fusion**; Also Known as C4FM (Yaesu's Digital Voice Mode)

- Yaesu Has Two Fusion Networks; WiresX and MMDVM/YSF
- WiresX Room US-CRHRC-TX 28534
- Our Fusion Repeaters Connected to MMDVM/YSF
 - Edna, Wharton, Shiner, Houston (Plans to Add More in the Future)
- Hotspots Can Connect to MMDVM/YSF
 1. MMDVM/YSF Repeaters 62426 (US-CRHRC-TX) Only connected to AllStar 28528 during CRHRC nets -- *62426 connected to SADRC via WiresX (disconnected during nets)
 2. MMDVM/YSF AllStar Hub 28528 (62427 US-CRHRC2-TX)

System Status Pages

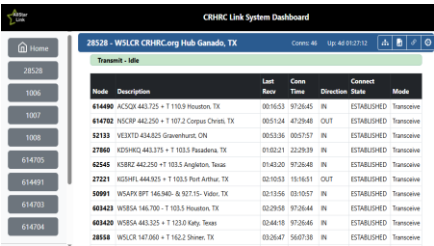
These pages show the operational status of the various systems used by CRHRC members. Each page will open in a new browser tab.

<https://stats.crhrc.org/allmon3/>– See current AllStar connections and activity.

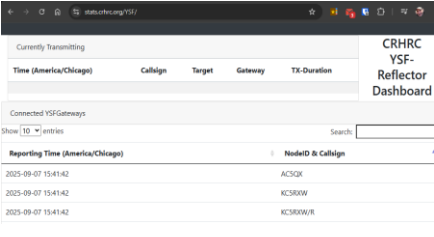
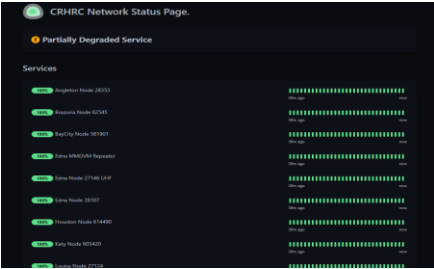
<https://uptime.crhrc.org/status/crhrc>– Check the operational status of CRHRC repeaters and resources.

<https://stats.crhrc.org/YSF/>– See current connections and activity of the Cross Roads YSF Reflector 62426.

<https://stats.crhrc.org/YSF2/>– See current connections and activity YSF2 Reflector 62427.



| Node | Description | Last Run | Conn | Direction | Connect | Mode |
|--------|--|----------|----------|-----------|-------------|------------|
| 614486 | W5LGR 443.725 + T 110.9 Houston, TX | 00:16:53 | 97.2646 | IN | ESTABLISHED | Transceive |
| 614702 | W5CRP 443.750 + T 107.2 Corpus Christi, TX | 00:15:36 | 47.2948 | OUT | ESTABLISHED | Transceive |
| 52133 | W3KTD 434.025 Gowerhurst, OH | 00:15:36 | 00:17:57 | IN | ESTABLISHED | Transceive |
| 27860 | K219HQC 443.175 + T 103.5 Pasadena, TX | 01:02:21 | 23.2939 | IN | ESTABLISHED | Transceive |
| 62540 | K5BHC 442.250 + T 103.5 Angleton, Texas | 01:43:20 | 97.2648 | IN | ESTABLISHED | Transceive |
| 27221 | K2SHFL 444.325 + T 103.5 Port Arthur, TX | 02:10:53 | 15.1651 | OUT | ESTABLISHED | Transceive |
| 50091 | W5APX BPT 146.540 & 927.15- Vidon, TX | 02:15:56 | 03:10:57 | IN | ESTABLISHED | Transceive |
| 60423 | W5BFA 146.700 + T 103.5 Houston, TX | 02:29:58 | 97.2644 | IN | ESTABLISHED | Transceive |
| 60420 | W5BFA 443.325 + T 123.0 Katy, Texas | 03:04:18 | 97.2646 | IN | ESTABLISHED | Transceive |
| 28554 | W5LGR 147.060 + T 162.2 Shiner, TX | 03:26:47 | 56.0738 | IN | ESTABLISHED | Transceive |



| Time (America/Chicago) | Callign | Target | Gateway | TX-Duration |
|------------------------|----------|--------|---------|-------------|
| 2025-09-07 15:41:42 | AC5QR | | | |
| 2025-09-07 15:41:42 | KC3ROW | | | |
| 2025-09-07 15:41:42 | KC3ROW/R | | | |

Connected YSF Gateways

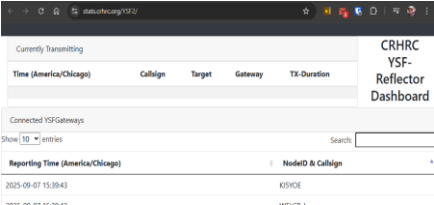
Show 10 entries

Reporting Time (America/Chicago)

NodeID & Callign

2025-09-07 15:39:43

KD3DIE



| Time (America/Chicago) | Callign | Target | Gateway | TX-Duration |
|------------------------|---------|--------|---------|-------------|
| 2025-09-07 15:39:43 | KD3DIE | | | |

Connected YSF Gateways

Show 10 entries

Reporting Time (America/Chicago)

NodeID & Callign

2025-09-07 15:39:43

KD3DIE

Network Etiquette

Refer to Tech Net #10 Video on [YouTube](https://www.youtube.com/watch?v=...)

<https://technet.crhrc.org/wp-content/uploads/2025/01/Tech-Net-10-slide-deck-final.pdf>

Tech Net#10

. CRHRC Repeater 411
. CRHRC Repeater 411

aka ~~ Repeater Etiquette

Repeater Network Connection Policies

To maintain a quality link system CRHRC has adopted the following policies.

- CRHRC only accepts connections to our Main Hub node 28528.
- Interconnections of other large networks to the CRHRC Linked System is not permitted.
- Please make sure all current outside connections are disconnected before you connect to the CRHRC Linked System Hub.
- Your node should not be connected to any other nodes except nodes registered to your station, while connected to the CRHRC Linked System Hub.
- If you schedule an automatic connection to our Hub to participate in a net, please schedule the connection 10 minutes prior to start time.
- All Allstar nodes are required to have a PL input tone enabled while connected to the CRHRC link System Hub.
- CRHRC works very hard to adjust and balance the audio of all repeaters in the network. Nodes with improperly set audio (off frequency audio, overdriven audio or extremely low audio) will be disconnected to maintain the quality of the network.
- Nodes connecting to the CRHRC Linked System Hub must enable "stat reporting". Noncompliant nodes will be disconnected or blocked.
- Allstar node owners are required to have a valid email on QRZ.com for Network Controllers to contact you with any issues that may arise when connected to the CRHRC Link System.

<https://crhrc.org/wp-content/uploads/2024/08/CRHRC-AllStar-Connection-Policies.pdf>

Q&A

For additional questions or comments, email info@crhrc.org.